

PLAT OF S. E. WILLOUGHBY BOULEVARD

BEING A TRACT OF LAND LYING IN THE HANSON GRANT SITUATED IN MARTIN COUNTY, FLORIDA.

I, MARSHA STILLER, CLERK OF THE CIRCUIT COURT OF MARTIN COUNTY, FLORIDA, HEREBY CERTIFY THAT THIS PLAT WAS FILED FOR RECORD IN PLAT BOOK 11, PAGE 57, MARTIN COUNTY, FLORIDA, PUBLIC RECORDS, THIS DAY OF _____, 1988.

MARSHA STILLER, CLERK
CIRCUIT COURT
MARTIN COUNTY, FLORIDA

FILE NO. _____

BY: _____
DEPUTY CLERK

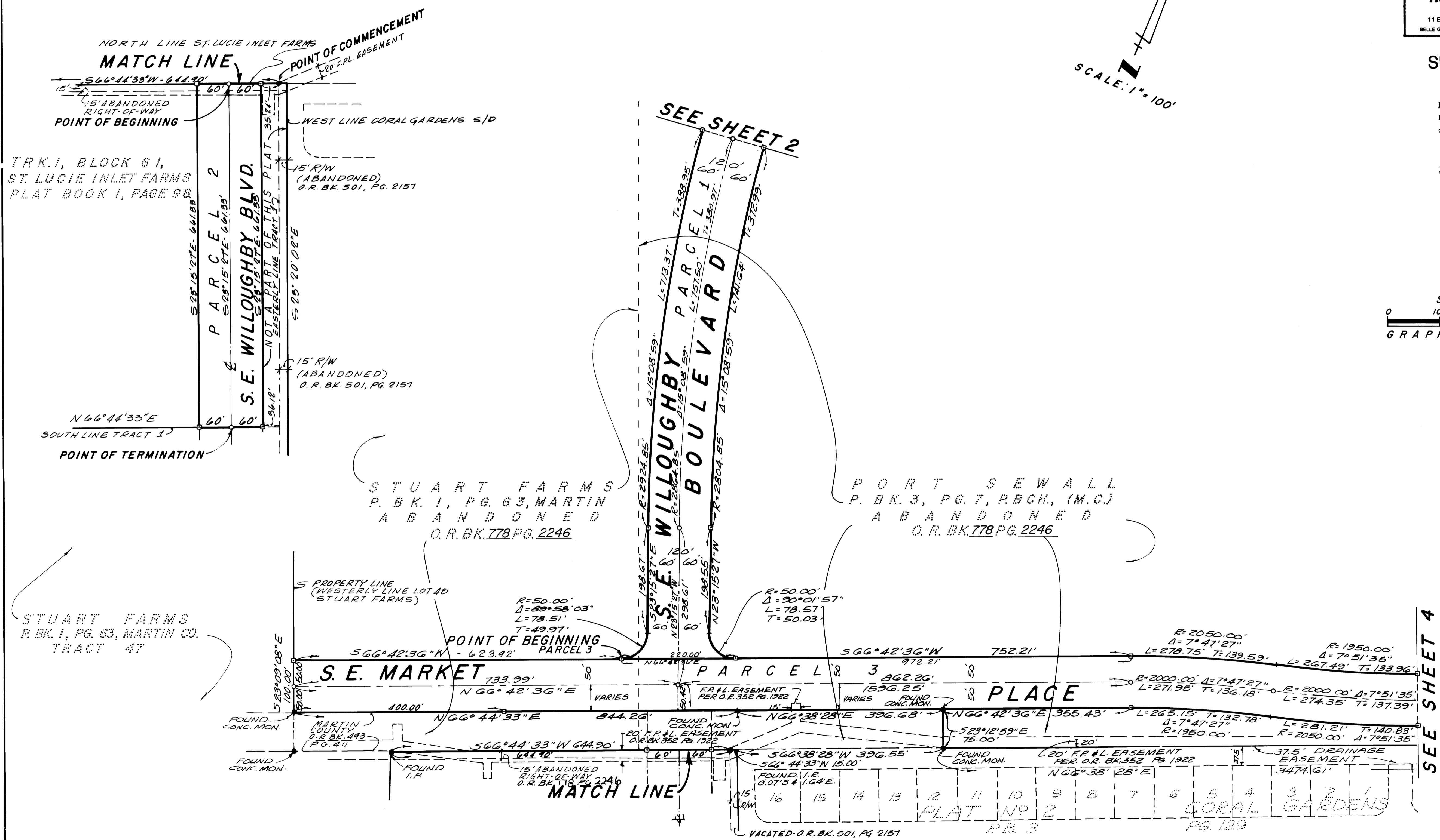
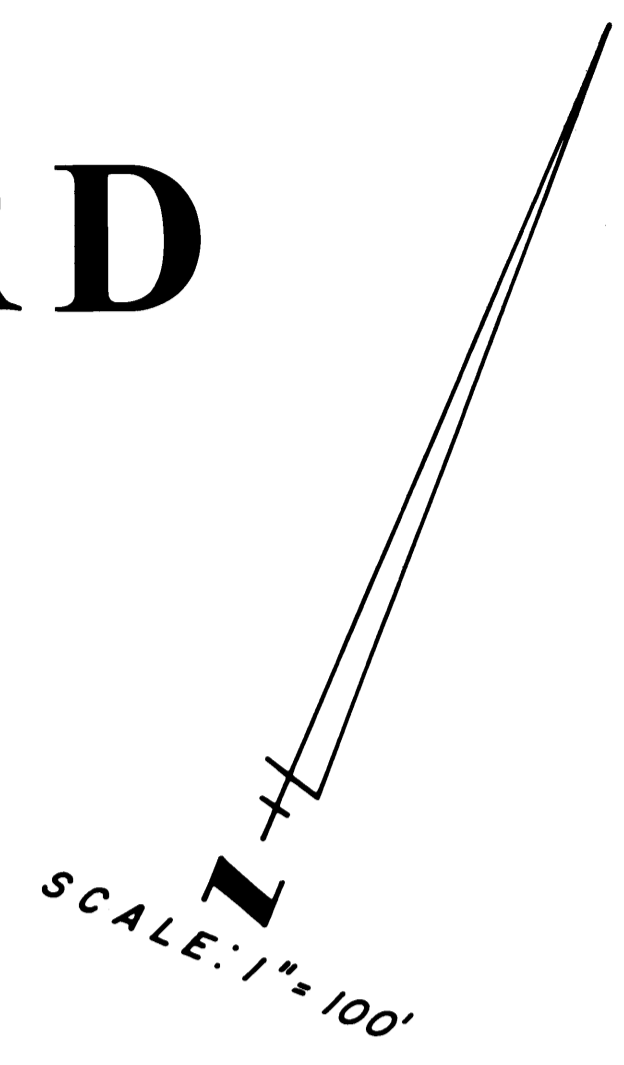
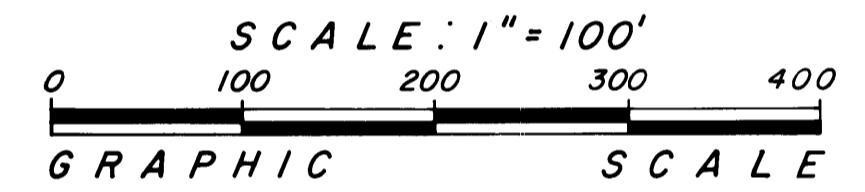
SEPT. 1988

Hutcheon Engineers
CIVIL ENGINEERS & SURVEYORS
11 East Osceola Street, Stuart, Florida 34994
BELLE GLADE WEST PALM BEACH STUART

SHEET 3 OF 4

BASIS OF BEARINGS
Bearings hereon are based upon the South line of Indian Street being North 66°44'28" East.

- LEGEND**
- INDICATES FOUND CONCRETE MONUMENT AS NOTED
 - INDICATES FOUND IRON PIPE AS NOTED
 - INDICATES SET P.R.M. AS NOTED
 - INDICATES PERMANENT CONTROL POINT (PCP)



SEE SHEET 4